



# Centre for **C**ultures of **R**eproduction, **T**echnologies and **H**ealth



Annual Report

2021



[www.sussex.ac.uk/corth](http://www.sussex.ac.uk/corth)



CORTH meeting during the pandemic.

# Welcome to CORTH

Established in 2014, our centre provides an intellectual space for intensive research, critical thinking and the development of an interdisciplinary body of scholarship on reproductive and health cultures. Framed by a specific interest in the processes of power and addressing health inequities, we promote research on the social, medical, public health, legal, and moral lenses through which reproductive health is perceived, produced, concretised and articulated (for instance, through new policies, engagement with new technologies, or new forms of social relations in reproduction).

With our unique focus on cultural ethnographic perspectives, our centre facilitates knowledge transfer partnerships between anthropologists, social and human scientists, health researchers, medical professionals, practitioners, legal activists and policy makers working internationally on critical issues in global maternal, sexual reproductive health (SRH), emerging technologies and health and human rights. A specific aim is to facilitate international dialogue through ‘Southern’ analytic models and practices. CORTH fosters a strong research environment for its international and home doctoral or postdoctoral students and through hosting visiting researchers and fellows, we seek to develop collaborative projects, produce quality research outputs and connect Sussex faculty, graduate students and our broader membership to key thinkers and policy makers in the field of SRH research.

## Contents

<b>Welcome to CORTH</b>	2
<b>Aims and Objectives</b>	3
<b>CORTH BLM statement</b>	3
<b>CORTH Research Themes</b>	3
<b>CORTH News</b>	4
<b>CORTH Impact</b>	5
<hr style="border-top: 1px dashed #ccc;"/>	
<b>CORTH Special Focus:</b>	
<b>LIVING WITH COVID-19</b>	6
<hr style="border-top: 1px dashed #ccc;"/>	
<b>Research Highlights</b>	9
<b>CORTH Conversations, Workshops, and Seminars</b>	9
<b>CORTH Publication Highlights</b>	12
<b>CORTH Connections</b>	13
<b>CORTH Members</b>	14

## The CORTH team

We have 226 members, including 52 Sussex faculty, 40 international senior research associates and advisors, 64 external members and visitors, and 68 internal and external graduate members. We encourage all those interested in our Centre to get involved! (visit our website to become a member). Founded in 2014, CORTH is based in the School of Global Studies at Sussex and works closely with other Schools on campus: the School of Law, Politics and Sociology (LPS), the Institute of Development Studies (IDS), the School of Education and Social Work (ESW) and the Brighton and Sussex Medical School (BSMS). CORTH is directed by Maya Unnithan, Professor of Social and Medical Anthropology in the School of Global Studies. Maya leads CORTH with her fellow co-directors, Hayley MacGregor, Senior Research Fellow at the Institute of Development Studies, Maria Federica Moscati, Senior Lecturer in Family Law (School of Law, Politics and Sociology) and Chi Eziefula, Clinical Senior Lecturer in Global Health and Infection (Brighton and Sussex Medical School).

# Aims and Objectives

- To bring **culture, political economy and discursive power frameworks** to the heart of maternal, sexual and reproductive healthcare scholarship, practice, policy making and implementation.
- To bring **researchers and non-academic partners** to address and have **policy impact** in the critical domains of reproductive, sexual and maternal health, especially with reference to **health inequalities, technology regulation and population policies**.
- To bring together **stakeholders in reproductive health research, practice and policy globally**, i.e., across northern and southern nations, through forging connections across a number of networks within each context, including: state and civil society actors, with a specific aim of engendering South-South exchange; to design **collaborative research and policy impact projects** with the partners identified in these networks; and to promote the work of researchers in civil society organisations.
- To translate and communicate ethnographic research methods for the understanding and use of health

providers, public health practitioners and policy makers; to hold **training workshops** in ethnographic methods for health researchers; to **bridge the methodological gap between healthcare policy, quantitative health research and ethnography**.

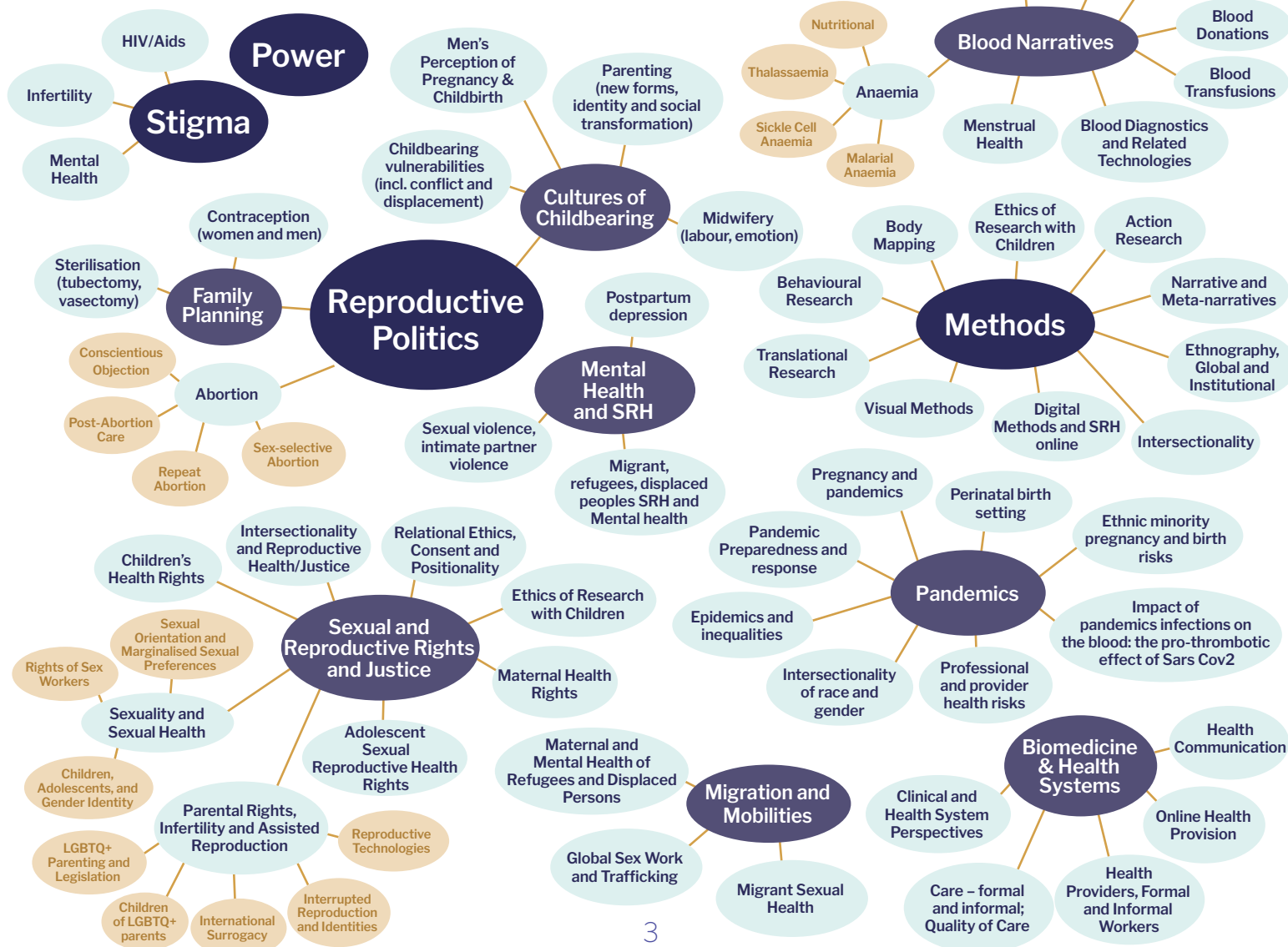
- To actively engage with the media to influence public debates on SRH related issues, the CORTH Blog is one outlet to achieve this aim.
- To gain **large programme and centre funding** to house active researchers and visitors, sustain international networks, and establish Sussex as a **global hub for research and dissemination on sexual reproductive health, maternal health and health rights**.
- To bring together a cross-section of Sussex academics working on SRH issues across the university network to further enable **international links**.

*Our values: interdisciplinary, critical thinking, collaborative research*

**We are against institutional racism, repressive violence and discrimination and committed to pursuing reproductive justice for all. CORTH members stand in solidarity with Black Lives Matter. We support all the activities around campus linked to decolonising the curriculum.**

## CORTH Research Themes

Since our inception, key themes continue to develop as areas of shared interest and an impetus for new projects



# CORTH News

## Hearty Felicitations to:

- **Rebecca Ashley** (CORTH doctoral student and tutor) for submitting her thesis 'Discontented midwives: the politics of care work in Iceland.' All our good wishes for the viva, Rebecca!
- **Govind Singh** (CORTH doctoral student, IDS) for winning Parkes Foundation funding for his PhD fieldwork on family planning in Telangana, India. Govind's doctoral work focuses on improving health policy in India particularly on issues regarding health systems, service delivery, equity, and behaviour change. His research (supervised by CORTH co-directors Hayley MacGregor and Maya Unnithan) proposes to reconceptualize the notion of 'quality of care' in family planning using ethnographic research methods.
- **Mary Frances Lukera** (CORTH graduate associate) who has been offered a lectureship in Education and Scholarship at Sussex Law School.
- **Natalie Edelman** who was awarded the title of Principal Research Fellow in the School of Health Sciences University of Brighton and was also made an Honorary Research Fellow in Primary Care & Public Health at BSMS.
- CORTH Director **Maya Unnithan** who has been invited by Public Health England to join their advisory group on Reproductive Health.
- CORTH co-Director **Maria Moscati** for launching the Peer Mediation Programme based at the Sussex Law School. Maria has also been appointed to the commissioning panel for research fellowships on data storage at the Ministry of Justice, Department for Education.
- **Astrid Blystad** (PI) **Karen Marie Moland**, **Haldis Hauknis** and 21 others including Maya Unnithan for receiving a grant from the Norwegian Research Council 'Reporting in context:



Govind Singh

- An inter-disciplinary initiative to strengthen maternal health services and surveillance in Ethiopia and Tanzania'.
- CORTH co-director **Hayley MacGregor** who has contributed to the WHO social science expert group on COVID-19.

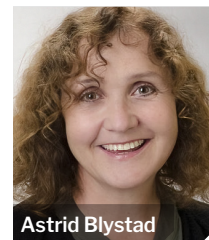
## Visitors

In our new academic year, we look forward to welcoming...

- **Sophia McCreary**, Undergraduate Student from the University of Chicago will be joining CORTH on the International Junior Research Associate (IJRA) Chicago-Sussex exchange programme this summer. Sophia will be working closely with Elizabeth Mills (CORTH Advisory Board Member) on a project titled 'The politics of relatedness: queer kinship and assisted reproductive technologies'.

All visits that were delayed due to the pandemic will be going ahead this year. These include...

- **Professor Astrid Blystad**, Professor in medical anthropology from the University of Bergen, Norway, with particular research interest in maternal health with an empirical focus on fertility, infertility, mother to child transmission of HIV, obstetric fistula, female genital cutting, incontinence and prolapse.
- **Professor Karen Marie Moland**, Professor at the Centre for International Health Global from the University of Bergen, Norway, with a particular focus on health policy in local contexts, health services utilisation and provision, culture and maternal health, adolescent reproductive health and rights and HIV.



Astrid Blystad



Karen Marie Moland

## Welcome to New Members

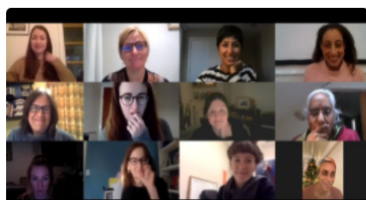
**External members:** **Elizabeth Wright Veintimilla** (Co-Chair of the Solidarity Program and Partnerships Committee Society of Gender Professionals); **Will Hood** (Creative Director of the Academic Podcast Agency); **Jane Cleary** (Consultant Midwife,

## CORTH Social Media and Website



### Top media Tweet earned 332 impressions

Last night, CORTH brought together midwives, doulas, health practitioners, researchers and activists from all over the world to speak about their perspectives on midwifery during the pandemic. A truly inspiring conversation. Thank you to everyone who attended! [#midwife](#) [#pregnancy](#) [pic.twitter.com/L2NskQG2vb](https://pic.twitter.com/L2NskQG2vb)



**CORTH Twitter** continues to have a highly active presence at the University of Sussex. Our Twitter handle has a regular engagement which involves daily tweets, live tweeting of events and the publicising of our members' research work with an average of 8000+ tweet impressions monthly. We currently have over 590 followers in total. Our Twitter handle is managed by Sophie Hurford, our centre administrator and Devanik Saha, a PhD researcher based at the Institute of Development Studies and the School of Global Studies at Sussex.



### CORTH Film

This year we released a short film to introduce new members to CORTH's interdisciplinary network and range of current activities. The film includes interviews with several of our members who describe how CORTH has influenced their research and activism. You can now view the film on our website!

### CORTH YouTube channel

Since all of our events have been online we have launched a CORTH YouTube channel. Here you can find our recent event recordings in case you missed the live discussions.

Brighton & Sussex University Hospitals); **Shezeen Suleman** (Team Lead, Midwifery and Toronto Community Health Program); **Kathryn Parker-Conway**, (Clinical Fellow in Emergency Medicine, Brighton and Sussex University Hospitals); **Miranda Bain** (School of Public Health, John Hopkins University); **Elena Caruso** (Doctoral Student, Kent Law School and Co-Founder of the Rete Italiana Contraccezione Aborto); **Ruchika Wason Singh** (Visiting Faculty, Ashoka University and Founder of A.M.M.A.A. The Archive for Mapping Mother Artists in Asia); **Dr. Pallabi Roy** (Assistant Professor, Centre for Asian and Transcultural Studies, University of Heidelberg); **Zula Afawork** (Program officer, Jhpiego, Ethiopia); **Fekadu Adugna Tufa** (Addis Ababa University)

**Doctoral Students and Research Associates:** **Hasarali Fernando** (Doctoral Student, BSMS); **Jean Paul Bikorimana** (Doctoral Student, BSMS); **Sunisha Neupane** (Doctoral Student, IDS); **Maria Wardale** (MA Migration and Global Development, University of Sussex); **Linn Lövgren** (MA Anthropology of Development and Social Transformation, University of Sussex); **Fiona Hill** (Undergraduate student, University of Sussex); **Corinna Thellmann** (Doctoral Student, BSMS); **Megan Schmidt Sane** (SSHAP Post Doc, IDS); **Roy Ritabrata** (Doctoral Student, LPS); **Diego Garcia** (Research Associate, BSMS)

## New Member Focus

### Shezeen Suleman

Shezeen Suleman is a Registered Midwife, and co-lead for the MATCH (Midwifery and Toronto Community Health) Program at South Riverdale Community Health Centre. Here she leads a team of four midwives and one social worker who are integrated into the health centre's primary care team, a unique model in the province. The team provides complete perinatal care, including pregnancy, birth and postpartum care, medication abortion and early pregnancy loss management. The Program has a strong focus on serving people who are homeless or under-housed, people without access to health insurance coverage, people living in poverty, newcomers to Canada and people who use drugs.



Shezeen Suleman

### Sophie Collins

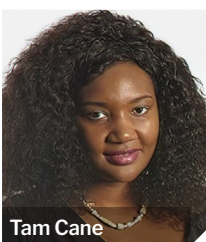
Sophie Collins is a Doctoral Researcher at the Institute of Development Studies (IDS) at the University of Sussex, supervised across IDS and Global Studies. Her PhD research uses the anthropological concept of framing to analyse the various power dynamics and influences of different actors involved in policy development and interventions around menstrual health in the context of the UK and Kenya. She is also working as a Qualitative Research Consultant on a number of projects including on the FCDO funded Girl's Educational Challenge, currently researching how Covid-19 has impacted girls' access to education and their learning outcomes in Nepal and Kenya.



Sophie Collins

### Tam Cane

Dr Tam Cane is a lecturer and programme lead for BA Social Work in the Department of Social Work and Social Care at the University of Sussex. She studied assisted reproductive health of people living with HIV and the implications of HIV on adoption experiences. Tam's research interests centre on HIV prevention modalities linked to parenting choices that reduce HIV transmission. She is interested in the range of decision-making processes linked to different methods of parenting choices made by people living with HIV.



Tam Cane

# Impact and Engagement

- **We are excited to announce that CORTH is now a member of the Transform U Academic Partner Network set up by the UNFPA.**

In April this year CORTH attended the UNFPA's Academic Partners Online Consultation on the new UNFPA Strategic Plan. Building on the success and lessons learned of its predecessors, the new Strategic Plan will continue promoting the implementation of the ICPD Programme of Action and focus on the achievement of the three transformative results: ending unmet need for family planning; ending preventable maternal deaths; and ending gender-based violence harmful practices, including child marriage and female genital mutilation. In the consultation our CORTH director provided inputs to the Strategic Plan on the key issues needed to strengthen this core mission.

- **CORTH Co-Director Maria Moscati delivered a workshop at the Magistrate Association 'Rainbow after the Storm: Same-Sex, Trans and non-Binary parents and Family Disputes'.**

The workshop analysed the manner in which sexual orientation and gender identity influence the resolution of family disputes. Attention was given to the practical implications for magistrates when dealing with parenting disputes involving same-sex parents, trans parents and non-binary parents. Questions answered included: What issues do same sex, trans and non-binary parents face when experiencing family conflicts? What are the issues and challenges that magistrates might face in such cases? How may the voices of children raised in sexually and gender diverse families be heard?

- **Mei Trueba (CORTH internal advisory group) recently published a report on her research project 'Forced Labour in the Malaysian Medical Gloves Supply Chain during the Covid-19 Pandemic: Evidence, Scale and Solutions, a Modern Slavery and Human Rights Policy and Evidence Centre (the Modern Slavery PEC), funded by the UK Arts and Humanities Research Council. The full report can be accessed at [www.ncl.ac.uk](http://www.ncl.ac.uk).**

This research focused on labour issues and indicators of forced labour in the production of medical examination gloves in Malaysia, and supply to the UK's National Health Service (NHS), during the Covid-19 pandemic. Against the backdrop of an already challenging situation regarding working conditions in this sector, the pandemic placed further pressure on labour standards, due to significantly increased demand for gloves and risks associated with Covid-19 transmission among workers. The research included a survey of 1,491 mainly migrant workers in Malaysia, 11 interviews with migrant workers and 14 interviews with manufacturers in Malaysia and with government officials, suppliers, and procurement managers in the UK.

- **News from parliament:**

An update from Ann Mette Kjaerby – Parliamentary and Policy Advisor at the UK All Party Parliamentary Group on Population, Development & Reproductive Health



Despite having to cancel all in-person events and study tours, the UK All-Party Parliamentary Group on Population, Development and Reproductive Health (APPG on PDRH) had a busy year in 2020–2021. Members worked closely with a number of NGOs, particularly UNFPA, IPPF, MSI Reproductive Choices, the

European Parliamentary Forum for Sexual and Reproductive Rights (EPF), Plan International UK and the UK SRHR Network, to advocate against the merger of the Department for International Development (DFID) with the Foreign and Commonwealth Office (FCO) and to resist cuts to the UK aid budget. Armed with information provided by our NGO partners, APPG on PDRH members argued in Parliament, through letters to the Foreign Secretary and Prime Minister, and in the media, against aid cuts affecting SRHR funding.

In June 2021, the APPG on PDRH launched its new parliamentary hearing report, *12 years of quality education: How investing in sexual and reproductive health helps keep girls in school*. The report was launched just before the G7 Summit in Cornwall, with a view to convincing policy-makers in Government that if they want to achieve their goals on girls' education, they will have to invest in sexual and reproductive health services to enable girls and young women to remain in school. The report found that formal education and sexual reproductive health and rights (SRHR) form a virtuous circle, as avoiding pregnancy and child marriage helps girls complete their formal education, while education helps adolescent girls to delay pregnancy and avoid child marriage, and made a number of recommendations for the UK Government, the UK's programme delivery partners, parliamentarians, national governments and recommendations on best practice.

## CORTH Blog Highlights

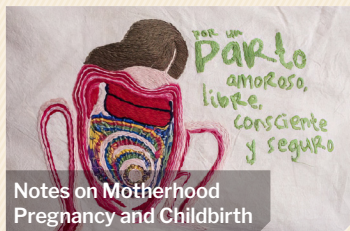
Our blog site continues to be a space for the critical exchange of knowledge and discussion from around the globe. Our recent blog posts include:

### Notes on Motherhood, Pregnancy and Childbirth

JANUARY 2021

By CORTH member **Marycarmen Rubalcava Oliveros** (Mexican Political Science graduate from UNAM and Visiting Junior Researcher at CORTH in 2019).

Marycarmen reflects on the notion of motherhood and her personal journey to becoming an advocate for desired, healthy and non-violent maternity decisions. She describes her process of understanding motherhood as a socio-cultural experience shaped by the community we live in, the values we share, and the information we learn. This led her to critique the dominant bio-medical understanding of pregnancy and birthing and how it has enforced problematic hierarchies. Ultimately, she argues that the biomedical approach is neither good nor bad by itself, but it is not enough (to describe what actually happens) and must be a subject of critical analysis.



Notes on Motherhood Pregnancy and Childbirth

### Reflections on Sexual and Reproductive Health Rights (SRHR) – Creating Supportive Online Communities

JANUARY 2021

By **Karin Båge** CORTH member and doctoral student in global health at Karolinska Institutet, Sweden.

Karin reflects on the importance of learning by creating community and networks to enable understanding across contexts, experience and discipline especially because the topic of Sexual and Reproductive Health Rights includes an extremely wide range of topics and perspectives. "If we are to truly develop understanding of this highly personal yet very politicized area of human life, we researchers need to not only meet across disciplinary siloes, but also do so in a supportive way....

Platforms like CORTH and ANSER have a crucial role to play in facilitating supportive communities in SRHR to encourage and sustain such connections and promote the development of relevant knowledge, particularly in times of repression on these vital issues."



## SPECIAL FOCUS

# Living with COVID – Looking Back, Looking Forward

This year, we asked members to send in their reflections on how COVID-19 has affected their lives, their work and sparked new initiatives going forward. As a network it is important to share our struggles and experiences of working in these difficult circumstances. CORTH directors and members have also led several domestic and international initiatives concerning the impact of COVID-19 on health, reproduction, pandemic preparedness and response and share their experiences.

“ Like everyone else I am also finding it a bit perplexing to cope up with this ‘new normal’. I have always been a very ‘chatty’ person who likes to connect to others very easily. But with the masks and social- distancing protocols in place, I feel that the ‘human touch’ is gradually fading from our daily lives. On the flip side, I also believe that because of this constant uncertainty around us, we are connecting more to each other from emotional and empathetic standpoints than ever before.

I suppose that the power-dynamics of conducting a research interview through virtual medium is constantly changing. I remember during an interview with an Indian lawmaker, I felt somewhat empowered to ask few difficult questions through the virtual medium which I might have struggled with during an in-person session. Looking forward, I strongly feel the need for more academic workshops on the nuances of conducting fieldwork interviews through virtual platforms, especially on sensitive issues.”

**Ritabrata Roy** (Doctoral Student, School of Law)

“ The pandemic has brought considerable personal challenges and raised awareness, in my own research practice and plans as well as elsewhere, of the need to ensure that those facing violence, abuse and coercion are not disenfranchised further from services and from research participation. I am taking forward plans to publish and implement *Trauma and Resilience Informed Research Principles and Practice* – including within sexual and reproductive health research, and have had accepted my proposal to run a special symposium on this topic at the World STI & AIDS Congress in July 2021.”

**Natalie Edelman** (Principal Research Fellow in Applied Sexual and Reproductive Health, School of Health Sciences, University of Brighton)

“ Like many of us across the sector, BPAS had to rapidly adapt in the early days of the pandemic to keep our abortion service running. In the face of enormous uncertainty, our team tirelessly campaigned for telemedical abortion and got a service up and running within just ten days of government approval- all whilst many of us had COVID! Since then, we have provided nearly 60,000 telemedical abortions and have been working to demonstrate that the service is safe, effective, and acceptable. We've also been developing our Centre for Reproductive Research and Communication (CRRC) under the new leadership of Dr Patricia Lohr, and look forward to engaging with many CORTH members through our work. This year has been incredibly difficult for everyone, but I'm enormously proud to have been involved in one of the very few silver linings of the pandemic.”

**Rebecca Blaylock** (Research and Engagement Lead, British Pregnancy Advisory Service (BPAS))

“ I am an artist and an independent researcher based in Delhi. The pandemic has affected my life in personal and professional ways. During the lockdown in Delhi which began in March 2020, the lack of easily availability of consumer goods , limited mobility and the anxiety of catching the corona virus, took a psychological toll on my mind. It was like suddenly having to step out of my comfort zone, into the unknown and the unpredictable spaces .Though I kept myself upbeat during the lockdown ,these existential concerns began to surface in my art works. In my pen and ink drawings I expressed my insecurities, in which, the home as the space of security also became endangered. This year I would like to continue with the art workshops and artist residency program of A.M.M.A.A. remotely. I would like to see through the possibilities of inclusivity which the online mode allows.”

**Ruchika Wason Singh** (Visual Artist/ Art Educator/ Independent Researcher)



Maria returns from Hospital.



MARIA MOSCATI

“ I have been struggling with Covid and long Covid since March 2020. Even when feeling emotionally and mentally drained, I have been always up for CORTH events. Being involved with CORTH has helped me to cope with brain fog, and more with the feeling of invisibility deriving from being let down by the system.”

**Maria Moscati** (CORTH Co-Director)

## Rockpools

(a poem written on the pandemic)

When the ocean turns its back on us to meet the horizon  
 In little tear-filled puddles, she leaves the debris of her soul.  
 Rage at the chronicles of deaths foretold,  
 Grief for children with no one to love,  
 Waiting for more ashes to darken her surface,  
 Anguished cries of despair hope to sink into silence,  
 But the bottom of her heart is not a quiet place.  
 Fire and earth simmer, molten lava biding their time  
 Steam, liquid metal, and molten rocks, our collective fury.  
 A Millennia passes, a billion puddles of salty tears  
 Rockpools to hold the debris of her soul.

**Sreeparna Chattopadhyay** (Independent researcher working and living in Bengaluru, India)

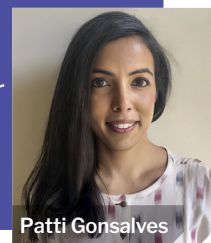
“ In January 2021, I was awarded a Social Science and Humanities Research Council of Canada (SSHRC) Partnership Engage Grant to look at the work of midwives under COVID with special attention to marginalised and racialized communities. My co-PI is Dr. Nadya Burton at Ryerson University and our community partner is the Association of Ontario Midwives. The project is called COVID-19: Ontario midwifery and reproductive justice in a time of crisis. This work we hope will have policy and practice implications not only for midwifery but for other health professionals.”

**Margaret MacDonald** (Associate Professor and Graduate Program Director, Department of Anthropology, York University)

“ In the last five years, and prior to my PhD I was setting up and running a young people's mental health campaign in India called It's OK to Talk for a non-profit organisation in India called Sangath. Some of the key challenges that young people listed in the first Covid wave were the loss of control, anxiety, depression, sleeping problems and problems related to domestic abuse.

In June I set-up a helpline at Sangath, a sort of virtual Covid well-being centre. It has three parts: the first being listening circles, where we wanted to talk and find solidarity; the second was a national helpline, and the third is a resource bank for people to help themselves or help others, but without meeting. We know so many who lost loved ones to Covid. I don't know anyone who did not lose at least one person in their immediate or extended family. Although things feel as though they have returned to normal, everyone has a fear of the next wave. I've had to work much harder on managing my own mental health through this. You have to know what's in your control and what isn't. It's still evolving.”

**Pattie Gonsalves** (Doctoral Student, Psychology)



Pattie Gonsalves

# Research Highlights and Updates

## Mental and Sexual Reproductive Health among Mobile Populations

### Mobility and Health Research Consortium

#### *Improving access to integrated Sexual and Reproductive Health and Mental Health services among mobile populations*

This NovoNordisk and the Wellcome Trust seed funded project is co-led by Priya Deshingkar and Maya Unnithan at the University of Sussex and CORTH member Maria Wardale has recently been appointed as research assistant. It will develop a larger grant pioneering an interdisciplinary international research network to address critical knowledge and evidence gaps around integrating mental health (MH) in the delivery of sexual and reproductive health (SRH) services among mobile populations. The network will take an inclusive approach to different categories of mobile populations including refugees, undocumented migrants, internally displaced persons (IDPs) as well as victims of trafficking, while recognizing that their health needs may be distinct. The project will primarily focus on the Sexual Reproductive Health (SRH) and Mental Health (MH) needs of migrant women, including but not limited to those relating to sexual and gender-based violence.

SRH and MH have so far been separate areas of research and intervention in healthcare delivery. The network will bring together researchers and practitioners to develop combined research and intervention strategies that work across these siloes to promote the well-being of vulnerable, mobile populations. It will aim to share knowledge and best applied practices to develop a full application for subsequent funding. The network builds on existing partnerships and work conducted by both Maya and Priya: the Universities of Sussex, Addis Ababa and Ghana; the Postpartum Support Network Africa, Nigeria, and the JP Grant School of Public Health, Dhaka. The focus countries are Nigeria, Ethiopia and Bangladesh, which face some of the most serious challenges of forced and undocumented migration.

The project is currently in the pilot phase, in preparation for the full grant proposal in July 2021. This phase includes meetings, workshops and field visits in order to develop ideas for potential pilot SRH and MH interventions, which will be discussed with key stakeholders in the focus countries in order to establish the feasibility and appropriateness of pilot intervention programmes in preparation for the full project.



Fekadu Adugna and his research assistant Khald Abdinasir interviewing a physician at the health centre at Kebri Beyah refugee camp.

PHOTO TAKEN BY ABDURAHMAN, MAY 2021

**Fekadu Adugna Tufa:** *‘As a co-applicant in the project, I am especially excited about the nexus between sexual and reproductive health (SRH) and mental health (MH) among mobile communities in Ethiopia. In a country that is witnessing hundreds of thousands forced displacements, irregular migrants and deportees every year, and where many of them are victims of SRH and MH, the academic and practical impact of the project is crucial.’*

## Youth café: Scoping an intervention in youth mental health support in the global south

**Co-PI, Emma Newport (University of Sussex) and Willice Onyango (Executive Director of the Youth Café, Kenya. Maya Unnithan (CORTH Director) is part of the multi-disciplinary team of co-investigators.**



A recent public engagement event, “Lockdown Live”, hosted by the University of Sussex and the Youth Café, a pan-African NGO, highlighted the importance of mental health to young people’s experiences in the pandemic and recovery from its aftermath. Four weekly online meetings in July 2020 (garnering a total of 105,000 views) brought together 54 youth participants from Ghana, Nigeria, Cameroon, Rwanda, the UK and Kenya to discuss pressing issues affecting youth in global and local contexts during the pandemic. Of the four weekly topics (learning in lockdown, COVID-related mis/disinformation, post-COVID futures and youth mental health), the mental health content generated the highest level of engagement. As well as a 45% increase in online participation, the mental health session revealed shared concern among discussants about the relevance of conventional “expert-led” approaches, alongside strong interest in pursuing contextually-sensitive solutions that draw from the perspectives of young people and their communities.

The project will build directly on this successful youth-engagement platform, led by the established partnership between the University of Sussex and Youth Café Kenya. An interdisciplinary team will provide expertise in youth experience and engagement; adolescent mental health (especially in low-income and ODA nations); clinical research methodologies; delivering interventions in low- and middle-income nations; digital ‘e-health’; and social recovery. The project will examine opportunities for scaling up an intervention through the Youth Café’s network of partner NGOs across the Global South and produce a blueprint for online mental health support for young people in ODA nations to prepare for future delivery of a pilot study.

CORTH hosted a workshop with the project’s co-investigators to discuss the preliminary findings of the project and to provide expertise on adolescent mental health and delivering interventions.



# CORTH Conversations, Seminars and Workshops

We have had a very active year with stimulating conversations and webinars with speakers from our global network of members. We will continue to run our events online going forward to make our discussions more open and accessible. All our events are available on our new YouTube channel.

## CORTH Meet and Greet Research Forum

At the start of our new academic term we met online to hear from a selection of senior and junior researchers about their work.

12 OCTOBER 2020

**Corinna Thellmann** (doctoral student, 5S Foundation, based at the medical school BSMS) described how she will be focusing on women who have Podoconiosis in Ethiopia from an intersectionality perspective.

**Megan Schmidt Sane** (Post-doc student, Social Science in Humanitarian Action Platform (SSHAP), IDS) discussed how her research will focus on the intersection of urban health, resilience, and informality.

**Devanik Saha** (doctoral student, IDS) presented a working abstract on his on-going field-based research on ethnographic men's experiences of antenatal care and pregnancy in urban Delhi, India.

**Sunisha Neupane** (visiting doctoral researcher, IDS) discussed her interests in health systems research, participatory research, and health equity and how this will be applied to her research in examining access to maternal health care in rural Nepal.

**Sophie Collins** (doctoral researcher, IDS) discussed how she will analyse the media and academic discourse and political interventions around period poverty in the UK and in Kenya to explore power relations in international development interventions for women.

**Govind Singh** (doctoral researcher, IDS) explained how his research proposes to reconceptualize the notion of 'quality of care' in family planning using ethnographic research methods. His study is based in the state of Telangana, India.

**Roy Ritabrata** (doctoral student, School of law, LPS) discussed his research on honour crime and male victims.

## CORTH Conversations 2020–2021

The CORTH CONVERSATION series, first introduced three years ago, has expanded to host a range of international experts invited by the Centre to talk informally about topical issues.

## Sex Education & Activism

23 NOVEMBER 2020

CORTH hosted a lively and well attended conversation between three sexual reproductive health rights activists who are passionately working on tackling barriers to proper sex education

## Reporting on Maternal Deaths in Ethiopia and Tanzania

CORTH is supporting the Norwegian Research Council project on Reporting in context: *An inter-disciplinary initiative to strengthen maternal health services and surveillance in Ethiopia and Tanzania*, led by Astrid Blystad (PI) Karen Marie Moland, Haldis Hauknis at the University of Bergen with 21 others including CORTH director Maya Unnithan. Maya will play a key role in designing the research on social accountability in collaboration with CBOs, professional organisations and associated researchers and facilitate stays at CORTH for junior and senior researchers. The project received 12 million NOK (approx. GBP £1 million) and will run from 2021 to 2025.

Mei Trueba (CORTH Senior Advisor) received funding from the Higher Education Innovation Fund (HEIF) for an Action-Research project aimed at mitigating the mental health effects of COVID-19 on NHS Staff. Mei will be PI, in collaboration with the BSUH Staff Engagement, Health and Wellbeing Department.

## International Narrating Blood Network Update

Our international narrating blood network has continued to meet online during the pandemic. Partners from Ghana, India and Nigeria have been collaborating on a grant funding proposal on anaemia. Other partners have been successful in procuring seed funding for international collaborative work on menstrual health in a new collaborative network called the LUNA CONNECTION.

### **Luna Connection: human rights and environmental implications of menstrual hygiene products**

This multidisciplinary and international network explores the social, legal, and environmental implications of menstrual health in Uganda, Kenya and Sudan. The project is focused on the menstrual health and human rights for adolescents (including rights to education), the impact of menstrual products on environmental sustainability and individual rights, and the balance between environmental sustainability and individual rights, including the social and economic sustainability of menstrual hygiene product use.

The Luna connection received funding from the International development challenge fund (IDCF) and Sussex sustainability research programme fund (SSRPF) for a research project titled *'It's (NOT) just blood: Exploring the impact of the intersection of menstrual health, adolescent's rights, and environmental sustainability'*. 1<sup>st</sup> Feb–31<sup>st</sup> July. The Luna members involved include: Chi Eziefula (PI), Maria Moscati (Co-I) and Maya Unnithan (CO-I), Caroline Ackley (BSMS), Hayley Macgregor (IDS), Viveinne Benson (Research office), Anne Gatugata (BSMS), with Sarah Staedke (LSHTM), Catherine Maiteke (Ministry of health, Uganda), Nafisa Bedri (Ahfad university for women, Khartoum, Sudan),

CORTH



Luna connection

in the UK. The event was chaired by Lisa Hallgarten (Head of Policy and Public Affairs at Brook) who facilitated discussion between Milly Evans (Youth activist who has worked with the Family Planning Association, Stonewall, Terrence Higgins Trust and the Youth Sexual Awareness for Europe (YSAFE) network) and Ben Kasstan (Vice Chancellor's Fellow and medical anthropologist at Bristol University). Milly discussed the challenges of being a young activist as well as looking at the role of technology, and what other kinds of spaces there are for sex education outside of the school curriculum. Ben Kasstan explored the tension around sex education and the rights afforded to religious and sexual minorities in England bringing in reflections from his own research on Jewish Orthodox religious communities. A key topic included the lack of resources, funding and knowledge, especially for LGBTQ groups.

SOPHIE HURFORD

**CORTH**  
Centre for Cultures of Reproduction, Technologies and Health

**SEX EDUCATION & ACTIVISM**

**CORTH CONVERSATION**

Monday 23 November  
1.30 - 3pm

Zoom

Register on Eventbrite

University of Sussex

**MILLY EVANS**, Youth Activist  
Youth sex education advocate. Milly has worked on various sex education campaigns and is a health journalist and editor at Patient.

**BEN KASSTAN**, Bristol University  
Vice Chancellor's Fellow and medical anthropologist. Research interests: the intersection of health, religion and state.

**LISA HALLGARTEN**, Brook  
(Healthcare Justice for Young People)  
Head of Policy and Public Affairs at Brook. Lisa's focus is on young people's rights to sex education and advocating for rights-based law and policy.

## Midwifery & COVID-19

**Saraswathi Vedam** (Lead Investigator of the Birth Place Lab and Professor of Midwifery in the Faculty of Medicine, University of British Columbia)

**Sheezen Suleman** (Team Lead, MATCH (Midwifery and Toronto Community Health) Program at South Riverdale Community Health Centre)

**Jane Cleary** and **Katie Tibble** (Consultant Midwives, Brighton & Sussex University Hospitals)

**Kathryn Parker-Conway** (Clinical Fellow in Emergency Medicine Brighton & Sussex University Hospitals)

7 DECEMBER 2020

Globally, COVID-19 has disrupted aspects of birth that make it a safe and positive experience for women. In December CORTH led an international and multi professional conversation centred around perspectives of midwives from the UK and Canada, working on the frontline during the pandemic. Changes to their practice such as inhibiting partners from being present at the birth were detailed. Innovative new roles for midwives were also introduced including a social media midwife, to improve communications. Women's difficult experiences of pregnancy, birthing and their postnatal time were empathically discussed but also, acknowledgement that for midwives and maternity staff in general, the pandemic imposed incredibly challenging and stressful working conditions. The academic perspective was given by Professor Saraswathi Vedam who pointed out that for many pregnant and birthing women around the world (such as refugees) social distancing and other COVID-19 measures have proven impossible to work with.

SOPHIE HURFORD

**CORTH**  
Centre for Cultures of Reproduction, Technologies and Health

**MIDWIFERY & COVID-19**

**CORTH CONVERSATION**

Monday 7 December  
4.30 - 6pm UK time

Zoom meeting

Register on Eventbrite

University of Sussex

A CORTH conversation between midwives from Canada and the UK on their experiences of working during the pandemic.

**Saraswathi Vedam**, UBC  
Lead Investigator, Birth Place Lab & Professor of Midwifery, Faculty of Medicine, University of British Columbia

**Sheezen Suleman**, South Riverdale  
Team Lead in MATCH (Midwifery and Toronto Community Health) Program, South Riverdale Community Health Centre

**Katie Parker-Conway**, Brighton & Sussex  
Clinical Fellow in Emergency Medicine, Brighton and Sussex University Hospitals

**Katie Tibble**, Brighton & Sussex  
Consultant Midwife, Brighton and Sussex University Hospitals

**Jane Cleary**, Brighton & Sussex  
Consultant Midwife, Brighton and Sussex University Hospitals

## Reproductive Democracy and Abortion Law Reform in Argentina

**Paola Bergallo** (Law Professor and Researcher at Universidad Torcuato Di Tella in Buenos Aires)

**Alicia Ely Yamin** (Lecturer in Law and Senior Fellow at the Petrie-Flom Center for Health Law Policy, Biotechnology and Bioethics at Harvard Law School)

17 FEBRUARY 2021

After many years of tireless campaigning abortion was formally legalised in Argentina this year! We were lucky enough to have CORTH member and Argentinian law professor **Paola Bergallo** speak about her extensive experience working on this. Over the last fifteen years she has been conducting research from a sociolegal perspective on abortion laws and legal mobilization. She has led multiple action-research projects and has collaborated with civil society organizations and governmental leaders in the campaign for abortion law reform. Paola unpacked the complex history and succession of events that led to this historic landmark for women and democracy. The event was chaired by Alicia Ely Yamin, well-known human rights lawyer who has pioneered legal work on reproductive rights, facilitated discussion around what the implications are looking forward in Argentina and why there is still much more work to be done.

SOPHIE HURFORD

**THE CENTRE FOR CULTURES OF REPRODUCTION, TECHNOLOGIES & HEALTH**

**REPRODUCTIVE DEMOCRACY AND ABORTION LAW REFORM IN ARGENTINA**

Speaker: **Paola Bergallo**  
Universidad Torcuato Di Tella in Buenos Aires

Chair: **Alicia Ely Yamin**  
Harvard Law School

**WEDNESDAY 17 FEBRUARY**  
5 - 6.30PM (UK TIME)

ZOOM EVENT - REGISTER ON EVENTBRITE

## CORTH Webinar

### Baby Brokers: The Role of Facilitators in Low Cost Transnational Surrogacy

**Elo Luik** (University of Oxford)

28 OCTOBER 2020

Drawing on fieldwork in India and the UK as well as extensive digital ethnography, Elo Luik discussed findings from her doctoral thesis (2018) which explored the business of transnational commercial surrogacy as a particular kind of product, service and market, and the challenges it poses to how we think of intimacy and biology in the context of the increasing commercial potential afforded by advances in biomedicine. Focusing on the role that facilitators have come to play in this increasingly global and complex industry Elo discussed how they navigate uncertainty as they operate in morally and legally grey areas. Elo's particular interest is in the new meanings and forms that intimacy, kinship and parenthood take in the context of a commercialised industry. Her presentation on the new kinds of relationships it creates between bodies, technologies, markets and aspirations was particularly engaging.

## CORTH Webinar

### Conditional Fertility: Multispecies Kinship, Care and Community

**Katharine Dow** (Senior Research Associate in Sociology and Deputy Director of the Reproductive Sociology Research Group (ReproSoc), University of Cambridge)

12 MAY 2021

Katharine's research focuses on connections between reproductive and environmental concerns and activism, from a multispecies perspective. In this talk, Katharine discussed her ongoing ethnographic research with seed-savers and seed activists in London, exploring how they conceptualise relationships between themselves, and the plants and the environments in which they live and grow. Katharine put forward a conceptualisation of conditional fertility, which aims

SOPHIE HURFORD

**THE CENTRE FOR CULTURES OF REPRODUCTION, TECHNOLOGIES & HEALTH**

**CONDITIONAL FERTILITY: MULTISPECIES KINSHIP, CARE AND COMMUNITY AMONGST LONDON SEED-SAVERS**

**Katharine Dow**  
University of Cambridge

**WEDNESDAY 12 MAY**  
4 - 5PM (UK TIME)

ZOOM EVENT - REGISTER ON EVENTBRITE

to characterise the complex and contingent relations of care and cultivation that unfold over time between individuals and their environments. Our co-director Chi Eziefula chaired the discussion which covered topics such as narratives of race, place and appropriation in the context of seed saving.

## CORTH Webinar

### Constructing Opportunities: Recognizing resilience in people living with HIV seeking to adopt

Tam Cane (Social Work, University of Sussex)

12 MAY 2021

Tam's work focuses on people living with HIV who had gone through fertility treatment and adoption. She focuses on lived experiences of enduring the reproductive treatment journey and adoption process. Drawing on resilience theory and concepts of adaptability, Tam discussed the rising- falling-and-rising, mastery, and resilient behaviors of those with HIV seeking to adopt and their reliance on the interconnection of health and social care. Tam was praised for her cross-disciplinary analysis that drew on theories from social work to anthropology as well as her nuanced approach to the term resilience and how it can be adapted for this specific context.

## CORTH Workshops

### Digital Health: Building Therapeutic Relationships Online

29 JANUARY 2021

In this full day workshop CORTH members and invited presenters gathered online to explore the opportunities and challenges faced by online providers in instituting therapeutic services. The workshop opened with a keynote delivered by Deborah Lupton, a medical sociologist who has pioneered the field of digital health. In the papers that followed many aspects of digital healthcare were discussed including sexual health services which have been early adopters of digital health care possibly because digitally enabled care is particularly attractive to users where stigma is a barrier to service access. Online testing for sexually transmitted infections is now routine practice in many public health systems and there are now services providing online contraception. Key discussions were focused around the following questions: Should and could digital health care re-create traditional therapeutic relationships? What new learning comes from the attempt to do/not do so? How do assemblages of human and non-human actors enact this endeavour? The workshop was led by Paula Baraitser who is an online sexual health provider for the NHS. Paula has a keen interest in developing context-sensitive online health services and is collaborating with CORTH on this critical issue.



## CORTH Network Events

### Mainstreaming Gender and Social Inclusivity in Covid-19 Responses: Case Studies from the Field

3 SEPTEMBER 2020

This webinar was hosted by AISE Consulting and discussed experiences of mainstreaming gender and ensuring social inclusion in responses to the Covid -19 pandemic in health and development. It combined experiences from International organisations, academia and civil society to provide a

holistic view on ways to ensure intersectionality in formulating and implementing projects focused on Covid-19. The founder of AISE Emilomo Ogbe is a long standing CORTH member. CORTH director Maya Unnithan joined as a panellist to discuss 'Mainstreaming gender and vulnerable populations in Covid-19 responses, Lessons from the UK'. Maya focussed on the timely responses from organisations such as the Royal College of Midwives and the Royal College of Obstetricians and Gynaecologists in the early days as the pandemic unfolded. Jurgen Menzes from the International Labour Organisation in Geneva provided some key insights into the need for joined up thinking around the economic implications of the pandemic for disabled people.



### Generations Together: Learning from young activists and adult allies

28 JANUARY 2021

CORTH co-director Maria Moscati (School of Law) organised a global conversation with young activists from Bolivia, Senegal, Togo, and the United States about intergenerational collaboration and how adults can most effectively support youth activism. Bridging diverse contexts and struggles, including climate justice, working children's rights, and young people's participation in the design and implementation of public policy, the webinar explored different approaches to allyship and the challenges and potential for adults and young people to work together in pursuit of a more just and sustainable world.

### Procreative Systems. An Ethnographic Analysis on Italian Same-Sex Parenting

Corinna Sabrina Guerzoni (Research Fellow at the Department of Political and Social Sciences of Alma Mater Studiorum – University of Bologna, Italy).

25 FEBRUARY 2021

This fascinating event was organized jointly by CORTH and the Family, Relationality and Kinship Research Group at the Law School. The presentation combined three different ethnographic studies that Dr Guerzoni has conducted on Italian same-sex parenting. She discussed how singles and gays, who cannot have access to artificial reproductive technologies ARTs (law 40/2004) or adoption (law 184/1983) in Italy, have created their own families travelling abroad. Parenting is not a direct consequence of the birth of a child; it is more an outcome of the construction of a reproductive project composed by multiple passages, obstacles and changes. Genes, biology, and gestation are meaningless without the creation of each specific procreative system, that is the representation of children as fruit of a precise, particular and unrepeatable story.

Procreative Systems. An Ethnographic Analysis on Italian Same-Sex Parenting.

CORINNA SABRINA GUERZONI



# CORTH Publication Highlights

Here we provide a selection of recent publications from CORTH members

**Edelman, N, Whetham, J, Cassell, JA, de Visser, R, Mercer, C, Jones, C, Gersten, A & Bremner, S 2020**, 'Performance of a tool to identify different types of self-reported sexual risk among women attending a contraception and sexual health clinic: results of a cross-sectional survey', *BMJ Sexual & Reproductive Health*. <https://research.brighton.ac.uk/en/publications/performance-of-a-tool-to-identify-different-types-of-self-reporter>

Thirunavukarasu, A, **Edelman, N & Daley, N 2020**, Blog on new sexual & reproductive health vulnerabilities in Covid-19. Faculty of Public Health Specialist Interest Group on Sexual and Reproductive Health: <https://research.brighton.ac.uk/en/publications/new-sexual-and-reproductive-health-vulnerabilities-in-the-context>

Kasstan, Ben. 2021. "A Free People, Controlled Only by God": Circulating and Converting Criticism of Vaccination in Jerusalem. *Culture, Medicine & Psychiatry*: <https://doi.org/10.1007/s11013-020-09705-2> <https://link.springer.com/article/10.1007/s11013-020-09705-2>

Sychareun, Vanphanom, Jo Durham, Molina Choummavong, Chansathit Taikeophithoun, Phouthong Phommavongsa, Vathsana Somphet, Vassana Thammavongsa, and **Pascale Hancart Petitot**. 2021. 'Lifestyles, Sexuality and Gender: Vulnerability to STIs and Unplanned Pregnancy among Female Migrant Beer Promoters in Lao PDR'. *Culture, Health & Sexuality*, May, 1-16. <https://www.tandfonline.com/doi/full/10.1080/13691058.2021.1913233>

**Trueba, Mei, Mahmood Bhutta, and Arianne Shahvisi**. 2021. Instruments of health and harm: how the procurement of healthcare goods contributes to global health inequality. *BMJ Medical Ethics* 47:423-429.

Zhou, J., **Blaylock, R.** & Harris, M. Systematic review of early abortion services in low- and middle-income country primary care: potential for reverse innovation and application in the UK context. *Global Health* 16, 91 (2020). <https://doi.org/10.1186/s12992-020-00613-z>

Marshall O, **Blaylock R**, Murphy C and Sanders J. Risk messages relating to fertility and pregnancy: a media content analysis [version 1; peer review: awaiting peer review]. *Wellcome Open Res* 2021, 6:114 (<https://doi.org/10.12688/wellcomeopenres.16744.1>)

Saha, Devanik. (2020) "Women struggle to access safe maternal care in the world's harshest lockdown." *Medical Anthropology Quarterly Rapid Response Blog Series*, Accessed May 25, 2021. <http://medanthroquarterly.org/?p=530>.

MacDonald, Maggie Forthcoming in 2021 "The place of traditional birth attendants in global maternal health: Policy retreat, ambivalence, and return." In L Wallace, M MacDonald and K Storeng (eds). *Anthropologies of Global Maternal Health: from policy spaces to sites of practice*. Springer Nature.

Moscato, Maria; Palmer, Michael and Roberts, Marian (2020) *Comparative Dispute Resolution*, Edward Elgar Publishing

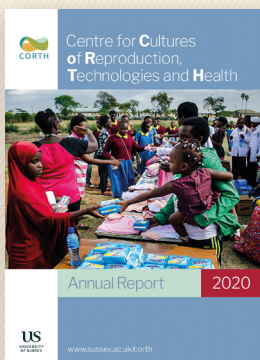
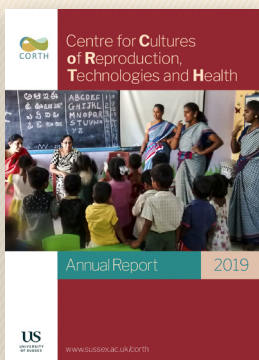
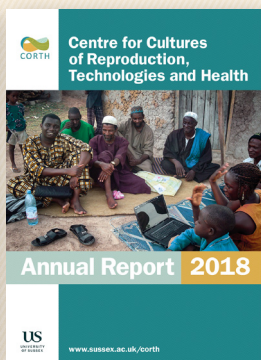
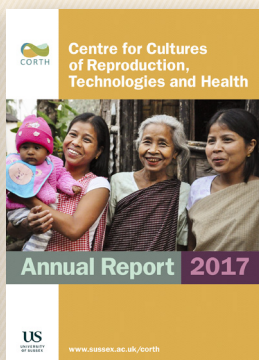
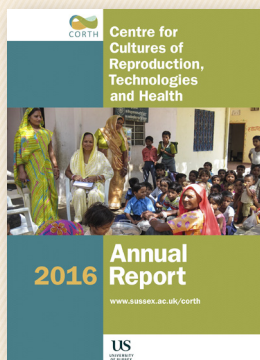


Moscato, Maria (2020) 'Negotiating within legal ambiguity: same-sex partners, family disputes and negotiation in Italy', in Moscato, Palmer and Roberts (eds) *Comparative Dispute Resolution*, Edward Elgar Publishing, pp. 146-157.

Unnithan, Maya (2021). "Reproductive and Maternal Health in Anthropology." In *Oxford Bibliographies in Anthropology*. Ed. John Jackson. New York: Oxford University Press.

Unnithan, Maya (2021), *Conflicted reproductive governance: The co-existence of rights-based approaches and coercion in India's family planning policies*. In L Wallace, M MacDonald and K Storeng (eds). *Anthropologies of Global Maternal Health: from policy spaces to sites of practice*. Springer Nature.

## CORTH Annual Reports



Please view previous CORTH annual reports via the website: [www.sussex.ac.uk/corth/publications/documents](http://www.sussex.ac.uk/corth/publications/documents)



# Connections

## International Connections

- Centre for Law and Policy Research, Bangalore, India
- University of Barcelona, Spain
- School of Public Health, John Hopkins University, USA **NEW**
- School of humanities, Indian Institute of Technology, Hyderabad
- Sri Padmavati Mahila Viswavidyalayam (Women's University), Tirupati, India
- Centre for Social Research in Health, UNSW, Australia
- JP Grant School of Public Health, BRAC University, Bangladesh
- FAGES, Universidade Federal de Pernambuco, Brazil
- University of Brasilia, Brazil
- Dept. of Midwifery, The University of British Columbia
- Department of Anthropology, Simon Fraser University, Canada
- Charles University in Prague, Czech Republic
- University of Cape Coast, Ghana
- University of Ghana, Legon
- Concern Worldwide, UK
- Anthropos India Foundation
- Centre for Health and Social Justice, New Delhi, India
- SAHAYOG Lucknow, India
- PRAYAS, Chittorgarh, India
- Public Health Foundation India
- Jhpiego, Ethiopia **NEW**
- Action Research and Training in Health, Udaipur, India
- Copasah, Centre for Health and Social Justice, Delhi, India
- Institute of Development Studies, Jaipur, India
- Centre for Community Medicine, Jawahar Lal University, Delhi, India
- Department of Sociology, University of Delhi, India
- Global Health Anthropology, University of Bergen, Norway
- African Centre for Migration & Society, University of the Witwatersrand, South Africa
- Addis Ababa University, Ethiopia **NEW**
- Graduate Institute of International and Development Studies, Switzerland
- Mahidol University, Thailand
- Department of Sociology and Anthropology, Mount Holyoke College, USA
- Department of Medical Anthropology, University of Arizona, USA
- FXB Centre for Health and Human Rights, Harvard, USA
- Kushal India, Andhra Pradesh, India.

- Development Solutions Inc, New Delhi, India
- MATCH (Midwifery and Toronto Community Health) Program at South Riverdale Community Health Centre, Canada **NEW**
- University of Heidelberg **NEW**

## UK Connections

- King's College, School of Global Affairs, London
- Oxford Human Rights hub
- United Nations Population Fund (UNFPA), UK
- Institute for International Health and Development, Queen Margaret University, Edinburgh
- Brighton & Sussex University Hospitals **NEW**
- Grand Network, Global Health Public Policy, School of Social and Political Science, University of Edinburgh
- Department of Law, University of Exeter
- Women's Health, King's College London
- Global Health, King's College, UK
- South Asia Institute, SOAS
- Department of Anthropology, University of Manchester
- Centre for Law and Human Rights, University of Essex
- Department of Social Anthropology, University of Cambridge
- Gender and Health Group, Liverpool School of Tropical Medicine
- Oxford Fertility, Reproduction and Sexuality Research Group, University of Oxford
- Institute of Social and Cultural Anthropology, University of Oxford
- Centre for Intimate and Sexual Citizenship (CISC), Department of Sociology, University of Essex
- Sexual Health 24 (SH:24), UK
- Department of Anthropology and Global Health, University of Durham
- Department of Geography and Environmental Sciences, University of Reading
- Department of Health Sciences, University of York
- Department of Health Services Research and Policy, London School of Hygiene and Tropical Medicine
- Research Department of Infection & Population Health, UCL Institute for Global Health
- Coastal Creatives Brighton UK
- Reproductive Sociology Research Group, University of Oxford **NEW**
- Academic Podcast Agency **NEW**

Refugees shopping in a shop next to the camp in Kebri Beyah Camp, Somali Regional State of Ethiopia. Mobility and Health Research Consortium.

# CORTH Members

## Senior Research Associates and Advisors

- Prof. Peter Aggleton (Centre for Social Research in Health, The University of New South Wales, Australia)
- Dr. Paula Baraitser (King's College Hospital; and Department of Global Health, King's College London, UK)
- Prof. Gillian Bendelow (Sociology of Health & Medicine, University of Brighton, UK)
- Ms. Marge Berer (International Campaign for Women's Right to Safe Abortion)
- Prof. Susan Bewley (Complex Obstetrics, King's College London, UK)
- Prof. Jan Brunson (Department of Anthropology, University of Hawaii, USA)
- Ms. Urvashi Butalia (Zubann Books)
- Dr. Abhijit Das (Centre for Health and Social Justice, New Delhi, India; Clinical Associate Professor, Department of Global Health, University of Washington, USA)
- Ms. Jashodhara Dasgupta (Coordinator SAHAYOG Lucknow, India)
- Prof. Jeannette Edwards (Department of Anthropology, University of Manchester, UK)
- Prof. Tine Gammeltoft (Department of Anthropology, University of Copenhagen, Denmark)
- Prof. Siri Gloppen (Professor, Director of the Centre on Law & Social Transformation, University of Bergen)
- Dr. Narendra Gupta (Prayas, Chittorgarh, India)
- Prof. Paul Hunt (School of Law, University of Essex, UK)
- Prof. Marcia Inhorn (Department of Sociocultural and Medical Anthropology, Yale University, USA)
- Dr. Kirti Iyengar (Co-director, Action Research and training in Health, Udaipur, India)
- Prof. Karina Kielmann (Institute for International Health and Development, Queen Margaret University, Scotland)
- Jayna Kothari (Centre for Law and Policy Research in Bangalore)
- Prof. Christine McCourt (School of Health Sciences, City, University of London, UK)
- Prof. Perveez Mody (Department of Anthropology, Cambridge University, UK)
- Alan Moosa (Interdisciplinary Global Development Centre, University of York)
- Prof. Lynn Morgan (Chair of Sociology and Anthropology, Mount Holyoke College, USA)
- Prof. Mark Nichter (School of Anthropology, University of Arizona, USA)
- Prof. Bronwyn Parry (School of Global Affairs, King's College, London)
- Prof. Tulsi Patel (Department of Sociology, University of Delhi, India)
- Prof. Stacy Leigh Pigg (Department of Sociology and Anthropology, Simon Fraser University, Canada)
- Dr. Navtej K. Purewal (Deputy Director, South Asia Institute, SOAS, University of London, UK)
- Prof. Mohan Rao (Independent Researcher, Bangalore, India)
- Prof. Ursula Rao (University of Leipzig, Germany)
- Prof. Shobhita Rajagopal (Director, Institute of Development Studies, Jaipur, India)
- Prof. Shalini Randeria (Rector, Institute for Human Sciences (IWM), Vienna, Austria; Graduate Institute of International and Development Studies, Geneva, Switzerland)
- Prof. Anna Robinson-Pant (School of Education & Lifelong Learning, University of East Anglia, UK)
- Prof. Jane Sandall (Department of Women's Health, King's College, London, UK)
- Prof. Parry Scott (Universidade Federal de Pernambuco)
- Prof. Sally Sheldon (Kent Law School, UK)
- Prof. Marilyn Strathern (Social Anthropology, University of Cambridge, UK)
- Dr. Sally Theobald (Gender and Health Group, Liverpool School of Tropical Medicine, UK)
- Dr. Soraya Tremayne (Fertility, Reproduction and Sexuality Research Group (FRSG), Oxford University, UK and ISCA and Journal of Middle East Women's Studies)
- Prof. Saraswathi Vedam (Professor of Midwifery and Lead Investigator of the Birth Place Lab, University of British Columbia)
- Prof. Ayo Wahlberg (Department of Anthropology, University of Copenhagen, Denmark)
- Dr. Alicia Yamin (Director, Health and Rights of Women and Children, FXB Harvard School of Public Health)

## Associated Sussex Faculty

- Prof. Janet Boddy (Education and Social Work)
- Dr. Paul Boyce (Global Studies)
- Dr. Philip Bremner (Law, Politics and Sociology)
- Dr. Rachel Burr (Education and Social Work)
- Dr. Tam Cane (Social Work)
- Prof. Jackie Cassell (Brighton and Sussex Medical School)
- Prof. Vinita Damodaran (History, Art History and Philosophy)
- Dr. Bethany Davies (Brighton and Sussex Medical School)
- Dr. Mark Davies (Law, Politics and Sociology)
- Dr. Priya Deshingkar (Global Studies)
- Prof. Mairead Dunne (Education and Social Work)
- Dr. Jerker Edstrom (Institute of Development Studies)
- Prof. Stefan Elbe (Global Studies)
- Prof. Bobbie Farsides (Brighton and Sussex Medical School)
- Dr. Anne Gatuguta (Brighton and Sussex Medical School)
- Dr. Lyndsay McLean Hilker (Global Studies)
- Dr. Tamsin Hinton-Smith (Law, Politics and Sociology)
- Dr Ben Hunter (Lecturer in International Development)
- Dr Collins Iwujji (Senior Lecturer in Sexual Health & HIV Medicine, BSMS)
- Dr. Pamela Kea (Global Studies)
- Prof. Carrie Llewellyn (Brighton and Sussex Medical School)
- Dr. Gitau Mburu (Honorary Research Fellow, School of Global Studies)
- Dr. JoAnn McGregor (Global Studies)
- Dr Daniel Michelson (Senior Lecturer in Clinical Psychology)
- Dr. Elizabeth Mills (Institute of Development Studies)

- Prof. Jo Moran-Ellis (Law, Politics and Sociology)
- Elizabeth Morris (Brighton and Sussex Medical School) Prof. Melanie Newport (Brighton and Sussex Medical School)
- Dr. David Orr (Education and Social Work)
- Dr. Pauline Oosterhoff (Institute of Development Studies)
- Dr. Dimitra Petrakaki (Deputy Head of Department of Management, Business School)
- Prof. Alison Phipps (Law, Politics and Sociology)
- Dr. Rebecca Prentice (Global Studies)
- Dr. Heike Rabe (Brighton and Sussex Medical School)
- Dr. Anne Roemer-Mahler (Global Studies, Centre for Global Health)
- Dr Anke Schwittay (Senior Lecturer In Anthropology & International Development),
- Dr. Zaman Shahaduz (Brighton and Sussex Medical School)
- Dr. Arianne Shahvisi (Brighton and Sussex Medical School)
- Dr. Alex Shankland (Institute of Development Studies)
- Prof. Margaret Sleeboom-Faulkner (Global Studies)
- Dr. Tanja Staehler (History, Art History and Philosophy)
- Dr. Hilary Standing (Institute of Development Studies)
- Prof. Paul Statham (Global Studies, Sussex Centre for Migration Research)
- Dr. Ruth Stirton (Law, Politics and Sociology)
- Prof. Rachel Thomson (Education and Social Work)
- Prof. Sue Thornham (Media & Film Studies, Centre for Gender Studies)
- Dr. Mei Treuba (Brighton and Sussex Medical School)
- Prof. Charles Watters (Education and Social Work)
- Dr. Catherine Will (Law, Politics and Sociology)

## External Members and Visitors

- **Ms. Zula Afawork** (Jhpiego, Ethiopia) **NEW**
- Daniela Alaattinoglu (European University Institute)
- Dr. Sajida Ally (Queen Mary, University of London)
- Daniel Amoako-Sakyi (Department of Microbiology, University of Cape Coast, Ghana)
- Karin Bage (Education Officer, Department of Public Health Sciences, Karolinska Institutet)
- **Ms. Miranda Bain** (John Hopkins University) **NEW**
- Dr. Nadine Beckman (Department of Life Sciences, University of Roehampton)
- Rebecca Blaylock (Researcher, British Pregnancy Advisory Service)
- **Ms. Elena Caruso** (Kent Law School) **NEW**
- Dr. Elizabeth Challinor (Centro em Rede de Investigação em Antropologia, University of Minho, Lisbon, Portugal)
- Dr. Sangeeta Chattoo (Department of Health Sciences, University of York, UK)
- Prof. Sreeparna Chattopadhyay (Associate Professor at the Ramalingaswami Centre on Equity and Social Determinants of Health at the Public Health Foundation of India, Bangalore)

- **Ms. Jane Cleary** (Brighton & Sussex University Hospitals) **NEW**
- Katie Conway (Brighton and Sussex University Hospital)
- Dr. Rita D'Alton-Harrison (Royal Holloway, University of London)
- Dr. Jenny Diggins (Oxford Brookes, UK)
- Prof. Raquel Irene Drovetta (Universidad de Buenos Aires)
- Dr. Sylvie Dubuc (Department of Geography and Environmental Science, University of Reading, UK)
- Prof. Sabina Faiz Rashid (BRAC University, Bangladesh)
- Dr. Soraya Fleischer (Department of Anthropology, University of Brasilia, Brazil)
- Dr. Rebecca French (Associate Professor of Sexual and Reproductive Health London School of Hygiene and Tropical Medicine)
- Dr. Bronwen Gillespie (Department of Oncology and Metabolism, University of Sheffield)
- Dr. Swati Gola (Lecturer in Dep. of Law, Exeter University)
- Prof. Kate Hampshire (Department of Anthropology, Durham University, UK)
- Danny Harvey (Concern Worldwide)
- Dr. Adom Philogene Heron (Goldsmiths, University of London)
- **Mr. Will Hood** (Academic Podcast Agency) **NEW**
- Dr. Nicky Hudson (Department of Sociology, De Montfort University, UK)
- Dr. Padmini Iyer (University of Cambridge)
- Dr. Ben Kasstan (Hebrew University of Jerusalem)
- Dr. Bregje de Kok (University of Amsterdam, Netherlands)
- Dr. Bernice Kuang (Geography and Environmental Science, University of Reading, UK)
- Sujit Ghosh (Kushal India)
- Dr. Kate Law (University of Nottingham)
- Dr. Po-Han Lee (Taiwan University)
- Prof. Irene Maffi (Unisciences, Université de Lausanne)
- Dr. Simon Mariwah (University of Cape Coast, Ghana)
- Prof. Anindita Majumdar (Assistant Professor of Sociology, Indian Institute of Technology-Hyderabad)
- Dr. Sheelagh McGuinness (University of Bristol Law School, UK)
- Dr. Perveez Mody (Department of Social Anthropology, University of Cambridge, UK)
- Prof. Karen Marie Moland (Department of Global Public Health and Primary Care, University of Bergen, Norway)
- Dr. Papreen Nahar (Department of Anthropology, Durham University, UK)
- Dr. Martha Newson (University of Oxford, UK)
- Prof. Ciara O'Connell (School of Law, Trinity College Dublin)
- Dr. Rachel Olson (The Firelight Group, UK)
- Ms. Chhaya Pachauli (Prayas, Rajasthan, India)
- Dr. Jennifer Palmer (London School of Hygiene and Tropical Medicine, London, UK)
- **Ms. Kathryn Parker-Conway** (Brighton and Sussex University Hospitals) **NEW**
- Dr. Pascale Hancart Petitet (Institut de Recherche pour le Développement, France)
- Dr. Kaveri Qureshi (Institute of Social and Cultural Anthropology, Oxford, UK)
- Mr. S. Ramanathan (Development Solutions)

- Dr. Kirat Randhawa (Brighton Health Trust)
- Dr. Sunita Reddy (JNU, Delhi, India)
- **Dr. Pallabi Roy** (Centre for Asian and Transcultural Studies, University of Heidelberg) **NEW**
- Dr. Róisín Ryan-Flood (Department of Sociology, Essex, UK)
- Mr. Zimran Samuel (Barrister, Doughty Street Chambers, UK)
- **Dr. Ruchika Wason Singh** (Ashoka University) **NEW**
- Dr. Sharifah Sekalala (School of Law, University of Warwick, UK)
- Dr. Katerini T. Storeng (University of Oslo, Norway)
- Dr. Fouzieya Towghi (Australian National University)
- Prof. Emma Varley (Brandon University)
- Dr. Jo Vearey (African Centre for Migration & Society, University of the Witwatersrand, South Africa)
- Prof. Saraswathi Vedam (Professor of Midwifery and Lead Investigator of the Birth Place Lab, University of British Columbia)
- **Elizabeth Wright Veintimilla** (Society of Gender Professionals) **NEW**
- Prof. Uma Vennam (Women's University in Tirupati, India)
- Dr. Emilija Zabiliūtė (Centre for Medical Anthropology, University of Edinburgh)
- Dr. Silvia De Zordo (Departamento de Antropología Cultural y de Historia de América y África, Universitat de Barcelona)

### Internal Graduates and Associates

- Ms Neemah Ahamed (Research Student, School of Law, Politics and Sociology)
- Ms. Rebecca Ashley (Global studies)
- Ms. Isabele Villwock Bachtold (Institute of Development Studies)
- Ms. Zuhra Bahman (Global Studies)
- Ms. Lavinia Bertini (Global Studies)
- **Mr. Jean Paul Bikorimana** (BSMS) **NEW**
- Ms. Sophie Collins (Global Studies and IDS)
- Mr. Amaran Cumarasamy (BSMS)
- Ms Laura Del Duca (IDS)
- Ms. Ebru Demir (LPS)
- Ms. Natalie Edelman (BSMS)
- **Mr. Hasarali Fernando** (BSMS) **NEW**
- **Mr. Diego Garcia** (BSMS) **NEW**
- Ms Patti Gonsalves (Psychology)
- Ms Annabelle Inman (Doctoral student in Anthropology),
- Ms Eleanor Kashouris (Doctoral student in Sociology)
- Ms. Linn Lövgren (Global Studies),
- Dr. Gillian Love (LPS)
- Dr. MaryFrances Lukera (LPS)
- Fernanda Meira (Visiting Fellow, Universidade Federal de Pernambuco)
- Ms. Larissa Mulka (BSMS)
- Ms. Wezi Mwangulube (Institute of Development Studies)
- Ms. Anyesha Nandi (Institute of Development Studies)
- **Ms. Sunisha Neupane** (IDS) **NEW**
- Ms. Ciara O'Connell (LPS)
- **Mr. Roy Ritabrata** (LPS) **NEW**
- Dr. Keith Rodway (Global Studies)
- Mr. Devanik Saha (Institute of Development Studies)

- **Ms. Megan Schmidt Sane** (IDS) **NEW**
- Ms. Amanda Scott
- Mr Govind Singh (IDS and Global Studies)
- **Ms. Corinna Thellmann** (BSMS) **NEW**
- Ms. Lourdes Akello Walusala (School of Media, Film and Music)
- **Ms. Maria Wardale** (Global Studies) **NEW**
- Ms. Florence Waruguru Wanjiku (LPS)
- Ms. Rosie Wigmore (Development Reimagined)
- Ms. Cassandra Anna Mary Wiener (LPS)
- Ms. Elaney Youssef (BSMS)

### External Graduates

- Dr. Kate Austin (Florence Nightingale Faculty of Nursing and Midwifery, King's College, UK)
- Leah Eades (University of Edinburgh)
- Mounia El Konti (University at Albany, USA)
- Thea de Gruchy (University of the Witwatersrand, South Africa)
- Ms. Marte Haaland (Centre for International Health, University of Bergen)
- Patricia Hamilton (Western University, Canada)
- Verena Kozmann (University of Vienna)
- Elo Luik (ISCA, Oxford, UK)
- Tackson Makandwa (University of the Witwatersrand, South Africa)
- Goitse Manthata (University of the Witwatersrand, South Africa)
- Miranda Marks (Universität Leipzig, Germany)
- Dr. Andrea Melberg (Centre for International Health, University of Bergen)
- Dr. Sayani Mitra (Georg August Universität Göttingen, Germany)
- Rishita Nandagiri (London School of Economics and Political Science)
- Dr. Emiliomo Ogbe (University of Ghent, Belgium)
- Dr. Liiri Oja (European University Institute, Italy)
- Ms. Elsa Oliveira (University of the Witwatersrand, South Africa)
- Dr. Zuzana Pešťanská (Comenius University, Slovakia)
- Dr Jennifer Roest (Nuffield Department of Population Health, University of Oxford)
- Melina Taylor (University of South Florida, Tampa)
- Dr. Christina Weis (DeMontfort University, UK)
- Ms. Lenka Zahradkova (Charles University, Czech Republic)

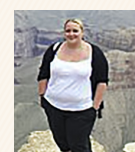
### Acknowledgements



Sophie Hurford  
(Our centre administrator)



Maria Andreou  
(Our information coordinator, Global Studies)



Susan Chater  
(Our anthropology department coordinator)

# Centre for **C**ultures of **R**eproduction, Technologies and **H**ealth

## **CORTH Governance**

### **Director of CORTH**

Maya Unnithan, Director of CORTH, Professor of Social and Medical Anthropology  
(School of Global Studies)  
[M.Unnithan@sussex.ac.uk](mailto:M.Unnithan@sussex.ac.uk)

### **Co-directors**

Chi Eziefula, Senior Lecturer in Global Health and Infection  
(Brighton and Sussex Medical School)  
[c.eziefula@bsms.ac.uk](mailto:c.eziefula@bsms.ac.uk)

Hayley MacGregor, Research Fellow  
(Institute of Development Studies)  
[h.macgregor@ids.ac.uk](mailto:h.macgregor@ids.ac.uk)

Maria Moscati, Lecturer in Family Law  
(School of Law, Politics and Sociology)  
[m.f.moscati@sussex.ac.uk](mailto:m.f.moscati@sussex.ac.uk)

## **CORTH administrative team**

Sophie Hurford, Research Centre Administrator (Global Studies)  
[s.hurford@sussex.ac.uk](mailto:s.hurford@sussex.ac.uk)

Devanik Saha, Social Media Officer of CORTH, PhD Researcher (IDS & Global Studies)  
[D.Saha1@ids.ac.uk](mailto:D.Saha1@ids.ac.uk)

Please visit: [www.sussex.ac.uk/corth](http://www.sussex.ac.uk/corth)

We regularly update our website with our latest events, research and members' activities.

🐦 We tweet and welcome you to follow us on Twitter: [@CORTHSussex](https://twitter.com/CORTHSussex)

The Centre for Cultures of Reproduction, Technologies and Health is part of the School of Global Studies, which is based in Arts C on the University of Sussex campus. The university is located at Falmer on the outskirts of Brighton, within easy reach of London and major international airports at Gatwick and Heathrow.

University of Sussex  
Sussex House, Falmer  
Brighton, BN1 9RH, United Kingdom

